

Test Record

Sample: $\pm 800\text{kV}$ three tension insulator set

1.1 Test layout

Insulator type	Number of units in each set
CA-767EZ	64*3

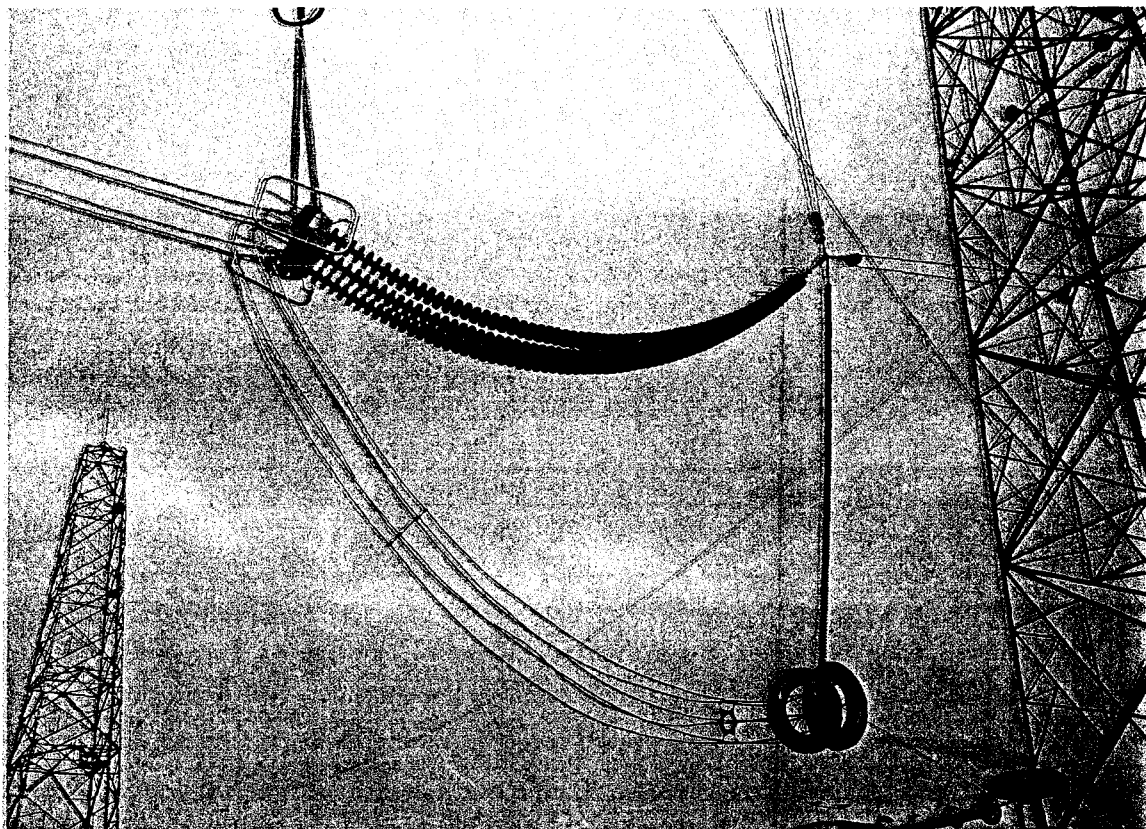


Figure 1 Layout of insulator string

1.2 Test items

1.2.1 Corona test

Test data: 4th. Jun. 10

Atmosphere condition	b = 100.4 kPa, $t_d = 23^\circ\text{C}$, $t_w = 16^\circ\text{C}$			
Corona extinction voltage kV				
Specified value	1#	2#	3#	Average value
$\geq 880\text{kV}$	1217 kV no corona			
Results	Passed			

1.2.2 Radio interference voltage (RIV) test

Test data: 4th, Jun. 10

Atmosphere condition	b = 100.4 kPa, $t_d = 23^\circ\text{C}$, $t_w = 16^\circ\text{C}$				
Specified value					
Applied voltage	Frequency		RIV		
880	1MHz		$\leq 1000\mu\text{V}$		
RIV measured value					
Applied voltage	RIV	Applied voltage	RIV	Applied voltage	RIV
968	1200.0	264	67.0	968	1200.0
880	257.0	352	95	880	674.8
792	601.4	440	120	792	536.0
704	425.8	528	151.1	704	379.5
616	338.2	616	213.4	616	239.4
528	268.6	704	268.6	528	169.5
440	190.2	792	379.5	440	134.6
352	120.0	880	601.4	352	95.0
264	67.0	968	953.2	264	37.0
Results					

Tested by: 魏林 冯岩 于佳欢 Witness:

Checked by:

(Handwritten signature)

(Handwritten signature)
(PULL)

1.2.3 Wet DC withstand voltage test

Test data: 3rd Jun. 10

Atmosphere conditions and the correction factors:				
$b = 101 \text{ kPa}$, $t_d = 26.5 \text{ }^\circ\text{C}$, $t_w = 18.5 \text{ }^\circ\text{C}$, $L = \text{ m}$, $K_t = 0.999$				
Artificial rain parameters for wet test: Water resistivity: $\rho_{20} = 102 \text{ } \Omega \cdot \text{m}$;				
Horizontal component: mm/min , vertical component: 3.1 mm/min				
Polarity	Specified value kV	Correction value kV	Test voltage kV	Results
positive	1120	1121	1150	withstand
negative	-1120	-1121	-1141	withstand
Conclusion		Passed		

Tested by: 魏杰 张岩 于佳欢 Witness:

Checked by: 